



3/16 Lansdowne Road St Kilda East, VIC



2



1



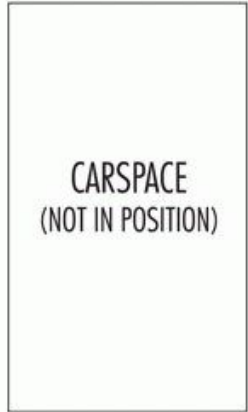
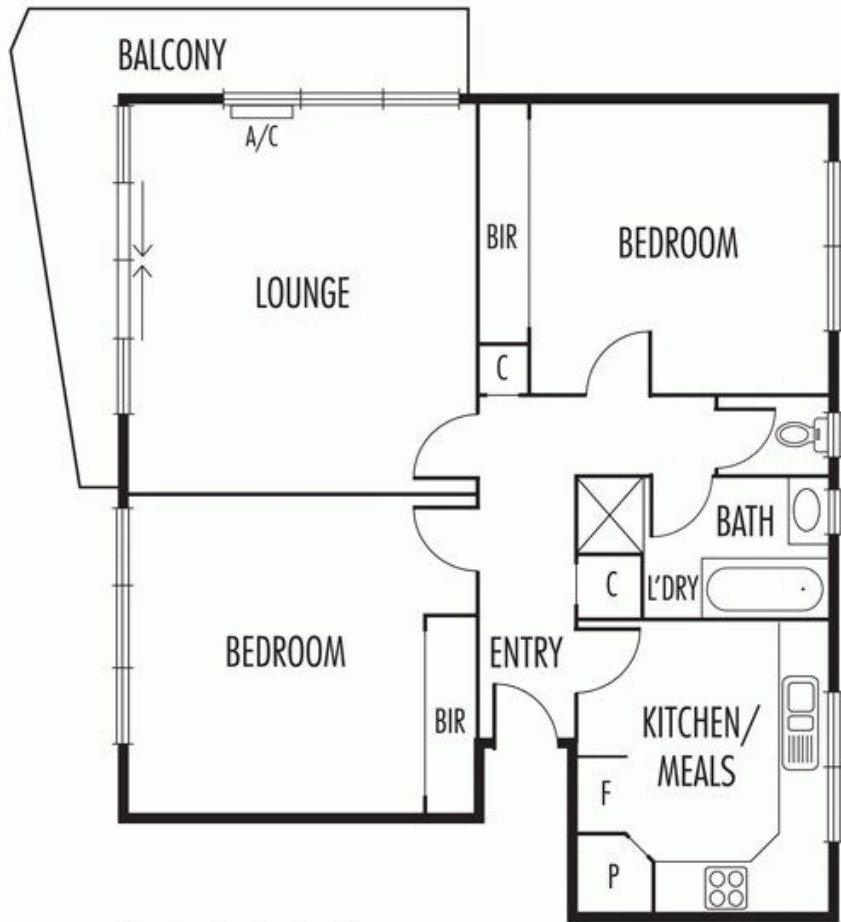
1

ALL YOU COULD ASK FOR - FIRST FLOOR TIMBER FLOORS, CARPARK & MUCH MORE

This first-floor two bedroom north-facing apartment with balcony and secure car space offers is located in a quiet, wide tree-lined street minutes' walk from shops and trams. Featuring a huge living & dining room with oversized window opening onto a north-facing balcony, gas kitchen with good storage including overhead cupboards and room to eat, two spacious bedrooms with built-in robes, modern bathroom, with bath & standalone shower, laundry taps, & separate toilet. Bonuses include, a secure car space, dishwasher, Split system in the lounge & timber floors throughout. The location is convenient to buses trains and trams, Alma Village, parks and Carlisle Street, while being close to the Chapel Street Precinct and Armadale and Malvern's shops and eateries.

Celeste Cuzzolin

Susie Minski



Disclaimer: Please note plans are indicative only and not drawn to exact scale. All dimensions are approximate. Potential buyers should view the property in person.